

APPENDIX 6.3 SELECTION OF TARGET NOTES & PLATES



View of target note 1 location looking a species rich wet grassland habitat. The sward consists of *Holcus lanatus*, *Anthoxanthum odoratum*, *Deschampsia cespitosa*, *Festuca rubra*, *Alopecurus geniculatus*, *Poa trivialis*, *Molinia caerulea*, *Juncus effusus*, *Juncus acutiflorus*, *Eupatorium cannabinum*, *Filipendula ulmaria*, *Angelica sylvestris*, *Ranunculus repens*, *Ranunculus acris*, *Lotus pedunculatus*, *Galium palustre*, *Succisa pratensis*, *Mentha aquatica*, *Potentilla erecta*, *Carex ovalis* *Rhytiadelphus squarrosus*, *Rhytiadelphus loreus*, *Calliergonella cuspidata*



View from target note 1 looking south through wet grassland



View in the wider vicinity of target note 2 showing inactive badger sett entrance on a rise in levels with drier organic substrate



View of target note 2 location *Betula pubescens* wet woodland with *Salix aurita*, *Salix cinerea*, *Ilex aquifolium*, *Sorbus aucuparia*, *Brachypodium sylvaticum*, *Dryopteris dilatata*, *Pteridium aquilinum* *Isoetes myosuroides*



View of target note 3 *Betula pubescens* wet woodland at slightly drier location on rise in level with *Ilex aquifolium*, *Salix cinerea*, *Salix aurita*, *Luzula sylvatica*, *Kindbergia praelonga*, *Rhytiadelphus squarrosus*, *Polytrichum commune*, *Isoetes myosuroides*, *Ulota crispa*, *Metzgeria furcata* and *Hedera helix*



View of target note 4 location of remnant uncut area of degraded raised bog, sub-marginal ecotope with *Calluna vulgaris*, *Cladonia portentosa*, frequent to abundant *Sphagnum capillifolium*, *Sphagnum papillosum*, *Sphagnum palustre*, *Sphagnum denticulatum*, as well as *Potentilla erecta*, *Vaccinium oxycoccos*, *Andromeda polifolia*, *Odontoschisma sphagni*, *Scapania gracilis*



View of roadside drain at the target note 5 location. The drain is on south side of public road separating the study area from the Cloonashanville Bog SAC to the north. Note fly tipping in drain



View south over cutover raised bog at the target note 6 location showing inundated cut cell. The ground cover is dominated by bare peat at this location



View of target note 7 location with tall leggy *Calluna vulgaris* representing the dominant pioneering vegetation on the bare peat of previously cutover raised bog.



View of target note 8 location showing *Calluna vulgaris* dominated sward in previously cut cell within cutover raised bog. Tall leggy *Calluna vulgaris* is dominant with *Molinia caerulea*, *Erica tetralix*, *Phragmites australis* and *Vaccinium myrtillus* occasional to frequent



View of the target note 9 location looking west from the T01 hardstand location showing a cut cell of raised bog dominated by dense *Molinia caerulea*, with leggy *Calluna vulgaris*, *Cladonia portentosa*, *Erica tetralix*, *Betula pubescens* and conifer seedlings



View north at target note 10 at the T01 location showing bare peat habitat



View of target note 10 location looking south over the T01 hardstand showing ground cover dominated by extensive bare peat with *Eriophorum vaginatum*, *Eriophorum angustifolium* and *Calluna vulgaris* forming the pioneering species



View of degraded raised bog marginal ecotope with high cover of *Cladonia portentosa* and tall leggy *Calluna vulgaris* at the southern extent of the Cloonashanville Bog SAC, north of the public road separating the SAC from the study area



View east, northeast from the existing defunct path entrance to the Cloonashanville Bog SAC showing spreading conifers and birch with leggy *Calluna vulgaris* and high grass content at the southern extent of the Cloonashanville Bog SAC, immediately to the north of the public road



View of target note 11 Carricknabraher River upstream of the proposed access road crossing. Vegetation occurring along the river bank comprises *Holcus lanatus*, *Agrostis stolonifera*, *Poa trivialis*, *Deschampsia cespitosa*, *Phragmites australis*, *Pteridium aquilinum*, *Filipendula ulmaria*, *Hydrocotyle vulgaris*, *Lythrum salicaria*, *Angelica sylvestris*, *Epilobium hirsutum*, *Epilobium palustre*, *Galium palustre*, *Mentha aquatica*, *Veronica beccabunga*



View of access road crossing point of the Carricknabraher River downstream of target note 11 showing *Betula pubescens* screening conifer plantation to the south and *Molinia caerulea* dominated remnant raised bog to the north



View of target note 13 location and conifer plantation with depauperated ground layer under plantation canopy



View of target note 24 showing species-poor improved wet grassland on organic soil at the T02 hardstand location. Species poor *Juncus effusus* becomes dominant to the west and north of the hardstand



View of mature tree at the target note 25 location with ivy cover. Limited preferred roost features for bats and no bats recorded roosting at this tree during emergence and re-entry surveys in the 2025 bat activity season



View from target note 26 looking south along the existing access road to be used as the Wind Farm access road to T02. Roadside hedgerows currently absent. Hedgerow established to be implemented as part of the BEMP in this area



View of target note 30 showing cutover raised bog at the edge of uncut degraded raised bog



View of target note 31 showing degraded raised bog sub-marginal complex 9/7 ecotope. Vegetation consists of *Trichophorum germanicum*, *Cladonia portentosa*, *Erica tetralix*, *Sphagnum capillifolium*, *Sphagnum papillosum*, *Sphagnum fuscum*, *Sphagnum denticulatum*, *Narthecium ossifragum*, *Eriophorum vaginatum*, *Eriophorum angustifolium*, *Odontoschisma sphagni*, *Vaccinium oxycoccos*, *Scapania gracilis*



View of target note 32 showing cover of *Calluna vulgaris*, *Cladonia portentosa*, *Eriophorum vaginatum*, *Eriophorum angustifolium*, with *Narthecium ossifragum* and occasional *Sphagnum capillifolium*, *Sphagnum subnitens*



View of target note 34 showing degraded raised bog marginal ecotope with functional drain. Species occurring here include leggy *Calluna vulgaris*, *Eriophorum vaginatum*, *Eriophorum angustifolium*, *Erica tetralix*, *Cladonia portentosa*, *Vaccinium oxycoccos* *Andromeda polifolia*, *Potentilla erecta* and *Sphagnum*



View of target note 35 location degraded raised bog sub-marginal ecotope with *Calluna vulgaris*, *Trichophorum germanicum*, *Cladonia portentosa*. *Eriophorum vaginatum*, some bare peat, *Sphagnum capillifolium*, *Sphagnum denticulatum*, *Sphagnum subnitens*, *Racomitrium lanuginosum*



View from target note 36 degraded raised bog sub-marginal ecotope with *Calluna vulgaris*, *Eriophorum vaginatum*, *Trichophorum germanicum*, *Nardus stricta*, *Sphagnum capillifolium*, *Racomitrium lanuginosum*, *Potentilla erecta*



View of target note 37 showing degraded raised bog sub-marginal complex 9/7 ecotope. Vegetation consists of *Eriophorum vaginatum*, *Eriophorum angustifolium*, *Calluna vulgaris* *Trichophorum germanicum*, *Cladonia portentosa*, *Erica tetralix*, *Sphagnum capillifolium*, *Sphagnum papillosum*, *Sphagnum fuscum*, *Sphagnum subnitens*, *Narthecium ossifragum*, *Odontoschisma sphagni*, *Vaccinium oxycoccos*, *Andromeda polifolia*



View of target note 38 showing degraded raised bog sub-marginal complex 9/7 ecotope. Vegetation consists of *Trichophorum germanicum*, *Cladonia portentosa*, *Sphagnum capillifolium*, *Sphagnum austini*, *Sphagnum papillosum*, *Sphagnum denticulatum*, *Racomitrium lanuginosum*, *Narthecium ossifragum*, *Eriophorum vaginatum*, *Eriophorum angustifolium*



View of target note 41 showing cutover raised bog at the T03 location with secondary pioneering vegetation occurring at this location



View of target note 42 existing access road leading to T03 location. Road has since been resurfaced



View of target note 43 looking west to T03 hardstand showing cutover raised bog, facebanks and drains. Mix of ruderal and aquatic vegetation comprising *Typha latifolia*, *Rubus fruticosus* agg., *Ranunculus repens*, *Taraxacum officinalis* agg., *Juncus effusus*, *Juncus bulbosus*, *Nardus stricta*, *Eriophorum vaginatum*



View from target note 46 showing the Owennaforeesha River at the proposed crossing location



View of target note 46 looking downstream along the Owennaforeesha River crossing location with recently felled conifer plantation to the west of the river and a species poor *Ranunculus repens* and *Ranunculus acris* dominated herb layer fringing the river



View of southeast from target note 52 to target note 53 showing the Owennaforeesha River, *Juncus effusus* and *Juncus acutiflorus* dominated riparian fringe to the east grading into degraded raised bog sub-marginal ecotope dominated by *Molinia caerulea* further east at target note 53



View of target note 55 showing previously cutover raised bog with secondary vegetation dominated by *Juncus effusus*, *Juncus acutiflorus* and *Molinia caerulea* with leggy *Calluna vulgaris* and *Erica tetralix*



At target note 66 showing deep cut drain currently culverted under existing access track. *Rubus fruticosus* agg. *Pteridium aquilinum* and *Salix aurita* fringe the drain



View of the target note 67 location showing wet grassland sward on previously cutover raised bog. *Juncus effusus* and *Juncus acutiflorus* are dominant with *Plantago lanceolata*, *Succisa pratensis*, *Ranunculus repens*, *Ranunculus acris*, *Potentilla erecta*, *Hydrocotyle vulgaris*, *Leontodon autumnalis*, *Filipendula ulmaria*, *Cirsium vulgare* occasional to frequent



View of target note 69 at the T08 hardstand location. Sward is dominated by tussocky *Juncus effusus* growing on previously stripped and cutover raised bog. *Juncus acutiflorus*, *Leontodon autumnalis*, *Poa trivialis*, *Deschampsia flexuosa*, *Anthoxanthum odoratum*, *Cirsium vulgare*, *Salix aurita*, *Salix cinerea*, *Pteridium aquilinum*, *Ulex europeus*, *Polytrichum commune* are all frequent to occasional



View of target note 71 at the T08 location. *Succisa pratensis* is frequent to abundant in the sward which is high at c. 50cm. *Juncus effusus* is dominant.



View of target note 70 at the T08 location looking east towards T09. The sward consists of a mix of ruderal and wet grassland species on cutover raised bog. Species include *Plantago lanceolata*, *Rumex acetosa*, *Cirsium vulgare*, *Ranunculus repens*, *Succisa pratensis*, *Holcus lanatus*, *Deschampsia flexuosa*, *Deschampsia cespitosa*, *Agrostis capillaris*, *Molinia caerulea*, *Ulex europeus*, *Juncus effusus*, *Filipendula ulmaria*



View of target note 73 at the T09 location with bat detector shown mounted at the turbine location. Disturbed and cutover bog surface at this location with *Salix aurita*, *Eriophorum vaginatum*, *Calluna vulgaris*, *Erica tetralix*, *Agrostis capillaris*, *Potentilla erecta* and spreading *Ulex europeus* occurring



Along proposed access road between target note 71 and 73 showing *Molinia caerulea* on previously cutover raised bog with cut peat saved in the background



Along proposed access road between target note 71 and 73 view of saved peat



View of peat spoil heap north of target note 73 with uncut drained and degraded raised bog in the background



View of target note 72 view of degraded raised bog marginal ecotope with one of a number of functional parallel drains in the foreground supporting a stand of *Pteridium aquilinum*. Leggy *Calluna vulgaris* with *Erica tetralix*, *Eriophorum vaginatum*, *Eriophorum angustifolium*, *Trichophorum germanicum*, *Racomitrium lanuginosum* and occasional *Sphagnum* present



At target note 73 T09 location looking north to remnant uncut and degraded raised bog. Image shows strip cut peat drying on bare peat at the T09 location.



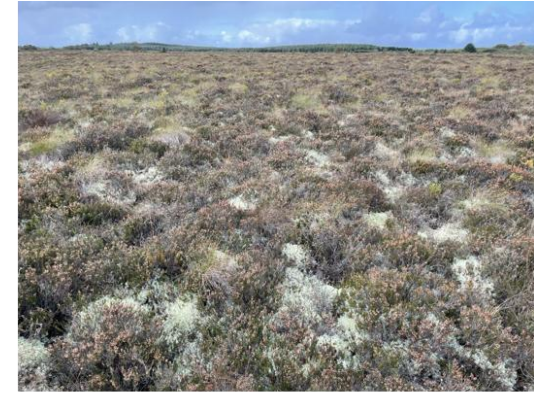
View of target note 73 at the T09 location with bat detector shown mounted at the turbine location. Disturbed and cutover bog surface at this location with *Salix aurita*, *Eriophorum vaginatum*, *Calluna vulgaris*, *Erica tetralix*, *Agrostis capillaris*, *Potentilla erecta* and spreading *Ulex europeus* occurring



View of degraded raised bog marginal ecotope at target note 75. Sward dominated by *Calluna vulgaris*, *Cladonia portentosa*, *Deschampsia flexuosa* with *Vaccinium myrtillus*, *Myrica gale*, *Sphagnum subnitens*, *Sphagnum capillifolium*, *Odontoschisma sphagni*, *Eriophorum vaginatum*, *Eriophorum angustifolium*, *Carex panicea*, *Andromeda polifolia*, *Scapania gracilis*



View of degraded raised bog sub-marginal ecotope at target note 76. Soft conditions underfoot. Sward dominated by *Cladonia portentosa*; *Calluna vulgaris* with *Sphagnum capillifolium*; *Sphagnum papillosum*; *Sphagnum tenellum*; *Sphagnum tenellum*, *Andromeda polifolia* *Phragmites australis*; *Eriophorum vaginatum*, *Eriophorum angustifolium*. Parallel drainage grips throughout



View of degraded raised bog marginal ecotope at target note 77. sward dominated by leggy *Calluna vulgaris* with abundant *Eriophorum vaginatum*, *Vaccinium myrtillus*, *Cladonia portentosa*, *Aulacomium palustre*, *Sphagnum capillifolium*, *Sphagnum palustre*, *Sphagnum denticulatum*, *Vaccinium oxycoccos*, *Narthecium ossifragum*, *Erica tetralix*



View of bare peat track at target note 79. Veg in the vicinity include *Eriophorum vaginatum*, *Juncus effusus*, *Calluna vulgaris*, *Salix aurita*, *Schistidium crassipilum*, *Molinia caerulea*, *Leontodon autumnalis*, *Bidens cernua*, *Calitriche* spp. *Potamogeton polygonifolius*



View of existing access road in the eastern wind farm parcel looking north from target note 81



View downstream along the Breedoge River from target note 82